

Identification sheet

Do not confuse Jimsonweed with New Zealand spinach

Jimsonweed

Datura stramonium L.
(Solanaceae)

New Zealand spinach

Tetragonia tetragonoides (Pall.) Kuntze
(Aizoaceae)

Foul-smelling annual plant measuring from 40 cm to over 1 m tall

Annual plant growing to a height of 20-50 cm

① Upright stem



①' Trailing or climbing stem



② Seedling has narrow linear-lanceolate cotyledons, first leaves are oval and elongated with smooth edges



②' Fleshy seedling with elongated elliptical cotyledons, first leaves are already **triangular-diamond shaped**



③ Large leaves (3 to 24 cm) with an oval outline, and **large uneven teeth ending in sharp tips**

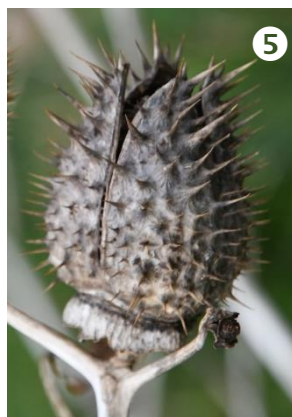
③' Leaves (2-11 cm) are triangular-diamond shaped, **smooth-edged, succulent, fleshy and brittle**, dark green above, pale green below



Jimsonweed

Datura stramonium L.
(Solanaceae)

④ Solitary **flowers** in the leaf axils, **large (6-11 cm), white** and trumpet-shaped



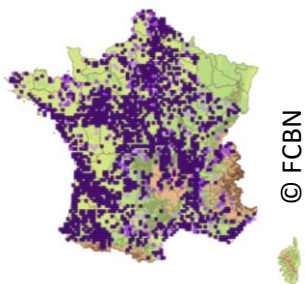
⑤ **Fruit:** upright, **thorny** capsule, about 5 cm long, opening through 4 valves

⑥ Seeds are **black-brown to greyish**, L: 3-4 mm; W: 2-2.5 mm, with a pitted wrinkled wall and +/- kidney-shaped



Very common in areas where the soil has been disturbed: cultivated fields, wasteland, gardens, roadsides and riverbanks

Species found throughout France, expanding!

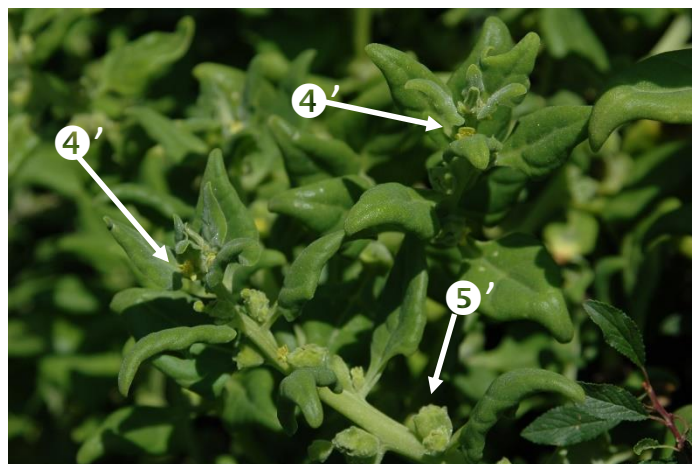


© FCBN

New Zealand spinach

Tetragonia tetragonoides (Pall.) Kuntze
(Aizoaceae)

④' **Flowers** inserted in the leaf axils, solitary or in groups of 2-3, bisexual, **yellowish-green, inconspicuous**



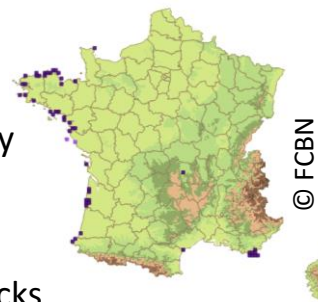
⑤' Conical or globular **fruit** 2.5-12.5 mm in length, hard and indehiscent, with **(3-)(4-)(5) horns**



⑥' Soft seeds with orange-brown seed coat, L: 2.5-3 mm; W: 2 mm, pear-shaped

Species **only naturalised on the coast** (Brittany, Atlantic coast, Var, Corsica); elsewhere in France it is rare and only grown in vegetable patches

On coastal sands and rocks



© FCBN

More information on *Datura stramonium*: <https://theconversation.com/pourquoi-et-comment-le-datura-contamine-t-il-les-denrees-alimentaires-113772>